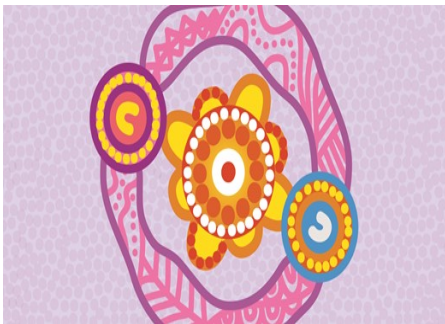




Anwerne angkerre-tyeke urrkaye, atyne anwernekenhe uthene atyewe uthenhe-ke, drug problem akerte-ke. (Part 2 of 3) - Arrernte



Evidence ratings:



This resource has undergone expert review. See our Help/Q&A section for more details.

Year: Year 7–8, Year 9–10, Year 11–12

Targeted Drugs: Alcohol, Drugs (General)

Tags: Arrernte Translation

Origin: Australian

Cost:
Free

Attachments

[Anwerne angkerre-tyeke urrkaye, atyne anwernekenhe uthene atyewe uthenhe-ke, drug problem akerte-ke-](#)

Fact sheet second part

Fact sheet second part arrpenhe ngenhenge-ntyete anwerne angkerre-tyeke nmilyhakenhe-akenhe angke-tyeke atyewe ngkwihinhe-ke.

Nthakenhe re anteme unte irretyenhe, atyewe ngkwihinhe-ke unthene atyene ngkwihinhe-unthene angketyeke?

Atyenpe irrem-le anaye alkwneme-le. Aheke-aheke iletynkenge, ngkwenge re awethe angetyakenhe aneketyenge.

Alakenhe apeke unte angkeme-re 'ayenge kwenhe ngkenge akngerre warreye irreme, ayenge ahentye aneme nhenhe alpme-ilettyeke'.

Akngerre-akngerre irremele alngerte angketyale. Akngerre-akngerre irremele alngerte angketyale, itnenhe apurer-le anthemele arteke, tyerrtye kwenhe mweke-kenhe irrentye akngerre, ngkwarle akerte-ke uthene ane drug akerte-ke, itne-arle apure arle irreme.

Ngenhe itne areme unte kwenhe itneke alngerte irretyakenhe itne ngkwenge ante arle aywerreke aneme.

Ihelaye iwenhe-le ame ngenhe warreye ileme.

Alakenhe ikwerenge itneke ilaye iwenhe-le ame itnenhe athnerte atyenpe-itetyakenhe. Ineke purrke ilelhaye, wenhe te anteme atnerle ngenhe akngarte-iweme.ame itne itterrentye akngarte lhe-tyekkenhe.

Itne arle alakenhe akwenye-irremele anemenge arle unte ilkelhe-tykenhe awelheme. Atyewe ngkwihinhe ane ngkwenge antweye arle ilpernytyale drugs-ke urrkapeme akwele arle.

Alakenhe apeke arle unte angkeme-re: 'Unte kwenhe arrpenhe areye arteke irremele anteme aneme. Ayenge ngkwenge arnterre warreye irreme unte arle rikerte-rikerte irreme.

Itneke ikireme-le, ane itnenhe aweme-le.

Atyewe ngkwinhe uthene ane atyene ngkwinke uthene ahentye aneme, ngkwenge ayiye iwenhe akerte apeke arle aneke ane nthakenhe-irreke akerte ayiye itne-kenhe awetyeke, atyeperre kwenhe kirrentye anetyeke, mwantye-le awaye ahele irretyale.

Alakenhe arle aneme,unte arle aweme-le aneme:

- 🌀 **Itne kwenhe ngenhe areme**, akaperte kwene irremele aneme, iwenhe-ke apeke arle itne angkerre iperre akerte-ke.
- 🌀 Iterareme-le arne iwenhe-akerte-ke itne angkeme kele imarte tyerneme-le anemele
- 🌀 Unte apeke **aweme-le apateme**, awethe **iletayeke renhe ilaye**, iwenhe-ke akerte apeke-ke rarle, re angkeme-ke, kele imarte angkentye ngkwinhe-le anteme ilirtneme-le, unte kwenhe itnenhe mpwantey-le awetyeke.
- 🌀 Mwantye-le awaye **nhakenhe-akenhe anthurre** ame atyewe ngkwinhe-le uthene, ngkwenge artweye-le uthene ngkwenge ileke, **itnenhe ameke-areme-le**.

Itne apkeke arle iterreme ngkwarle uthene drug iperre arlke kwenhe mwerre-ke anthene aneme.

Itne imarte ngkwenge atheke ahele irrerle, nhakenhe apeke arele unte angkeke itneke werne atheke.

Itnenhe ilperneme-le arteke iletayale, apure-rle antheme-le, itnenhe ayumpwele- arteke.

Urreke-ke impaye, ilenge-ngare re apeke tyerrtye arrpenhe areye akerte apeke awethe angkerre-tyenheke.

Apurte irremele angkerre-tyeke urrke

Apurte irremele angkerre-tyeke urrke, itne iterle aretyeke Mwerre arle itne akangkintye lyete aneme, kenhe drugs uthene ngkwarle-le uthene iperre, itne alkngwerre-tyenhe arle, arne nhenhe itneke areye-ke.

Part 3