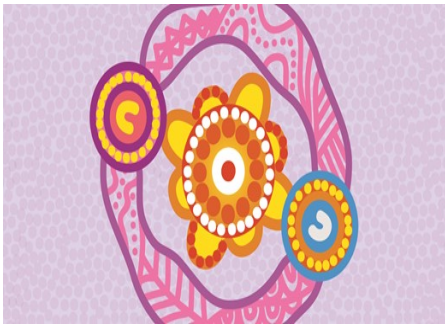




# Wangkamirli,pa help-pi maninjaku family,ki manu warlalja,ku kuja kalu nyina drugs jangka. (Part 3 of 3) - Warlpiri



## Evidence ratings:



This resource has undergone expert review. See our Help/Q&A section for more details.

**Year:** Year 7–8, Year 9–10, Year 11–12

**Targeted Drugs:** Alcohol, Drugs (General)

**Tags:**

**Origin:** Australian

**Cost:**

Free

## Attachments

[Wangkamirli,pa help-pi maninjaku family,ki manu warlalja,ku kuja kalu nyina drugs jangka-\(Part 3\)](#)

## Factsheet

Nyampu 3rd one,rla factsheetrla ngulaju nyarrpa yijala karlipa wankami yangka support maninjaku familyki.

## Kajinpa yapa drugs manu pama jangka support mani wangkanjarlu.

Kujarluju kaji kanpa help-pi mani nyuntu nyangu marlpa manu family drugs manu pama kujaku.

Manu kajili yani football kurra, rlangu kaji kanpa jana help-pi mani train jarrinjaku ngurrju yangka pamangku manu drugsrli ka jana ngawu mani yapaju.

## Support manu trust kirli nyinaya.

Family kapungkulu wardinyi nyina kajinpa ngurra ngurrju mardani.

Yangka pama wangu manu drugs wangu, manu kula pama manu drugs nganja nyanungurra puru. Yantarlu wirlinyi marda sports kurra manulu manyu karriya computer,rla.



## **Ngarrika jana yangka change palka, kala ngari murnma juku pulya.**

---

Kula ngarrika yampinjaku pama manu drugs yangka kulu karrarlu, lawa. Kajika pama manu drugs kirra jarrimi pina.

## **Marda kajili nyina jumati chage jarrinja wangu, ngulaju wangkayarla yungu safe nyina pama manu drugs kijaku.**

---

Kujarla wangkaya; "kapungku help-pi mani mangarri manu kuyuku ngarninjaku pama manu drugs puruju"

Kaji kanpa Janu ku-jarluju help-mani yangka kaninpa nyun-tu palka nyina wangkanjaku.

## **Help-pi mantalu jana community,rla nyinanjaku.**

---

Yapa kuja kalu nyina pama manu drugsrla ngulaju kalu jalpilki nyinamirra family wangulku manu communiti kijaku.

Support manirlipa jana jungangu.

Kaji kanpa jana help-mani kijilpanpa Jana kangkarla nyiya kanti kanti kirra kalu community, rli ngurru mani.



## **Warra warra kangka nyanu.**

---

Kajinpa nyanu wajampa nyayirni purdanyanyi, wangkayarla pimirdi nyanuku manu uncluku manu teacherku school wardingkiki marda nurseki.

Yapa yinya drugs wardingkirli mipa kaji ka yampimi manu change jarrimi.

**Positive Choices artwork by Jenna Lee (Larrakia artist, Gilimbaa).**