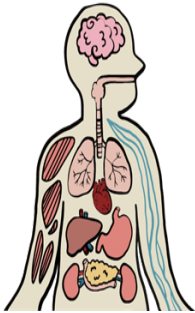




Game

## Strong Spirit Strong Mind: Interactive Body Tool



**Evidence ratings:**



This resource has undergone expert review. See our Help/Q&A section for more details.

**Year:** Year 9–10, Year 11–12

**Targeted Drugs:** Alcohol

**Tags:**

**Time Allocated:** Partial lesson (under 45mins)

**Origin:** Australian

**Cost:**

Free

### Available

The Interactive Body Tool is available on the Strong Spirit Strong Mind website.

[Access the Interactive Body Tool](#)

### Developers

Strong Spirit Strong Mind, Government of Western Australia Mental Health Commission

### Summary

Students learn about the short- and long-term effects of alcohol on different parts of the body.

### Format

An online, interactive tool where students select different parts of the human body and learn about how each part is affected by alcohol.

### Expected Benefits

- Increased knowledge and understanding of the effects of alcohol on the body

### Evidence Base

The benefits of this game have not been evaluated in a research study. The Strong Spirit Strong Mind website has been developed by the Government of Western Australia Mental Health Commission and uses a strength-based approach. The information is aligned with current evidence about the effects of alcohol and is presented in an easy-to-understand format.

